



# PRIMARY NEWSLETTER

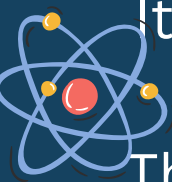
Fri 10th  
March  
2023

## *British Science Week: 13th - 17th March*

Europa Primary will be engaged in all things STEM this coming week.



We are very excited to welcome numerous visitors from our fantastic Europa community, who will be sharing their science knowledge and expertise with the classes.



It is not too late to contact us if you have time to contribute a session.

The theme this year is Connections, which can be interpreted in many ways. Please email your class teacher if you would like to take part.



It is great to post a variety of photos in our newsletter. If you are happy for your child to be in the newsletter, please can you check you have given consent on the schoolbase portal.

## IMPORTANT DATES

### March

- 13th - 17th Science Week
- 16th-22nd IB Art Exhibition - Chapel
- 17th PTA Coffee Morning - Chapel
- 21st- 24th Mock SATs
- 31st PTA Easter Cake Sale
- 31st 3DE Swimming sessions start
- 31st 3EE Catch up swimming session

### Looking further ahead:

- Easter Holidays - 3rd -14th April (inclusive)
- 17th - 19th April - Yr4 Residential

Please do not push the red button on the post to open the Thame Lane gate to let people into school during the day. The incoming person must push the buzzer on the Intercom, so Reception can assess who can come on site. Thank you for your understanding.

## CONTACTS & LINKS

General Enquiries: [reception@europaschool.uk](mailto:reception@europaschool.uk)

Reception : 01235 524060

Bus related: [bus@europaschool.uk](mailto:bus@europaschool.uk)

PTA related: [committee@europa-pta.org](mailto:committee@europa-pta.org)

SCIDS presents

# Empress Matilda

## THE MUSICAL!



Did you know that Empress Matilda, the daughter of King Henry I of England, was born in Sutton Courtenay?

A few of our primary and secondary students are involved in the production of Empress Matilda the musical. If you'd like to see them perform (and learn about the local history) please come to watch - there are still tickets available for the Friday performance.

Suitable for all ages!

To get tickets please call 01235 847707 or 01235 848335



## NEWS FROM THE ECO CLUB

There are many different projects which are being undertaken across classes to help the school become greener:

- Biodiversity: creation of animal houses and feeders, planting wildflowers
- Marine: Reduce the use of single use plastics, raising awareness around plastic pollution and the impact on our oceans
- Litter: creating anti-litter posters

If you would like to know more or would like to help, contact [s.harries@europaschool.uk](mailto:s.harries@europaschool.uk)

The eco club has started a project on plastic in the oceans. Take the quiz with your family. How many of these questions can you answer correctly?



Matrix Arts Centre is offering music taster lessons for 2- 7 year olds on Sunday 12th March in Sutton Courtenay. Please visit [www.matrixartscentre.org.uk](http://www.matrixartscentre.org.uk) for more details.

# PTA Events

March

Friday 17th

IB art exhibition and PTA coffee morning  
(in the chapel)

Friday 31st

PTA Easter cake sale - cake donations will be needed

Further ahead

April 28th

International Day - volunteers needed

June 17th

Summer Fete - volunteers needed

PTA-related contact

[committee@europa-pta.org](mailto:committee@europa-pta.org)

## CULHAM CALLING

Please send any articles / adverts that you would like to have published to [culhamcalling@europaschool.uk](mailto:culhamcalling@europaschool.uk) before Friday 24th March 2023.

The next issue of Culham calling will be issued on Friday 31st March 2023.

Due to the extremely high level of demand the Household Support Fund is now closed in South Oxfordshire. We are no longer accepting any new applications for this fund.

### **Other Help is still available**

If residents are struggling due to cost-of-living pressures the Community Hub can help. We offer a wide range of advice, including information on free or affordable food banks and council tax support. We can also signpost residents to debt advice, other cost-of-living support, information on housing support as well as guidance on how they can look after their mental health and wellbeing.

If residents need support they can contact our Community Hub Team during office hours on 01235 422600 or email [communitysupport@southandvale.gov.uk](mailto:communitysupport@southandvale.gov.uk)

<https://www.southandvale.gov.uk/wp-content/uploads/2022/11/Cost-of-Living-eleaflet-for-websites.jpg>