

A large, mature tree with dense foliage of bright yellow and orange autumn leaves stands in front of a multi-story stone building. The building has several windows, some of which are visible through the branches. The ground is covered with fallen yellow leaves. The scene is captured in warm, golden light, suggesting late afternoon or early morning.

Europa School UK Presentation to Parents

30 September 2025



Mission

Provide a multilingual and multicultural education for primary and secondary pupils delivered sustainably through a broad, challenging and internationally minded curriculum.

Vision

We give our pupils the best possible start in life by providing an inclusive multilingual and multicultural learning environment and by encouraging them to take ownership of their own learning. We help our students develop the skills they need to make a difference and to thrive in a modern world that changes fast.

Students graduate in the International Baccalaureate and are fluent and literate in at least two languages. These language skills and a global perspective enable them to study at leading universities both in this country and abroad, to enhance their job prospects, and enjoy a richer cultural life.

Strategic Pillars

Provide a broad, balanced, multilingual, enquiry-based curriculum from 4-18 in an excellent and engaging learning environment

Establish Europa as a leading IB World School and centre of excellence for teaching IB Programmes

Drive a pedagogically ambitious, reflective and innovative approach to integrated language learning

Promote and support environmental sustainability in the curriculum and practice

Offer an extensive extra curricular programme as a prominent and highly-valued aspect of the educational experience

Enablers

Generation of additional funds and resources to enable the school to achieve its development goals

Improvement of the physical environment and upgrading of infrastructure and facilities to support excellence in teaching and learning

A strong sense of community in the school (students, staff and parents) with open and effective communication both internally and externally

Development of strategic links with relevant organisations locally, nationally and internationally to further the school's educational aims and its place in the community.

Values

Global Perspective - Motivation - Enquiry - Respect - Community



School performance -national tests 2024-25

Phase	Headline results	LA/ National/Global comparison
EYFS	73% achieved good level of development GLD	LA 70%
KS1	91% passed phonics test by end of year 2	UK 89%
KS2 SATS	68% pupils attained expected standard in reading writing and mathematics.	UK 62%
S5 Middle Years Programme MYP certificate	95% standard pass in English and maths; 88% with a strong pass. 89% gained MYP certificate of which 47% were bilingual certificates.	UK strong pass 45% in 2024
S7 International Baccalaureate IB Diploma	BAC 97% pass rate with average mark of 34	Global 81% Average 30 UK 95% Average 35



S7 Destinations

	UCAS APPLICATIONS		
1	University of Reading	Biomedical Science	2025
2	SOAS University of London	Arabic and History of Art	2026
3	King's College London, University of London	Biochemistry	2025
4	Oxford Brookes University	International Hospitality and Tourism Management	2026
5	University of Nottingham	Law	2025
6	University of Cambridge	Modern and Medieval Languages	2026
7	University of Nottingham	Mathematics	2025
8	University of the Arts London	Fine Art: Painting	2025
9	University of Bath	Management with Marketing with work placement	2026
10	Middlesex University	Design Engineering	2025
11	UCL (University College London)	Medicine (6 years)	2025
12	University of Nottingham	Politics and International Relations	2025
13	University of Southampton	Oceanography	2025
14	King's College London, University of London	Economics	2025
15	University of Manchester	Law	2025
16	University of Sussex	Psychology	2025
17	University of Exeter	Mathematics with International Study	2026
18	University of Manchester	Philosophy and Criminology	2026
19	University of York	Chemistry	2025
20	Durham University	Liberal Arts	2025
21	Buckinghamshire New University	Aviation Management with Commercial Pilot Training in Aeroplanes	2026
22	University of Reading	Architecture	2025
23	University of Bristol	English and Philosophy	2025
24	King's College London, University of London	Geography and Environmental Science	2025



Destinations continued

Cohort of 2024			
25	Aberystwyth University	Creative Writing	2025
26	University of Essex	Biomedical Science (Including Placement Year)	2025
27	King's College London, University of London	Management and Modern Languages with a Year Abroad	2025
28	Nottingham Trent University	Graphic Design	2025
29	Nottingham Trent University	Aerospace Engineering (with Foundation Year)	2025
30	Queen Mary University of London	Biological Sciences with Foundation	2025
31	University of Sussex	Psychology with Neuroscience	2025
32	University of Leicester	Medicine	2025
33	Bristol, UWE	Construction Project Management	2025
34	Lancaster University	Design	2025
Foundation Course			
35	Abingdon and Witney College	Art Foundation	2025
36	University of Bournemouth	Art Foundation	2025
37	Abingdon and Witney College	Art Foundation	2025
38	Abingdon and Witney College	Art Foundation	2025
Applications Abroad			
36	ESMA (Montpellier)	3D Animation (full degree course)...	2025



School Improvement Priorities 2025-26

- Establish the new structure of baseline assessment in reception years
- Consolidate strategies in place for early reading support
- Improve writing skills particularly for boys in upper primary and lower secondary
- Prepare for re-evaluation of IB MYP and DP Programmes in 2026-27
- Review project work curriculum across the secondary cohorts
- Development of MYP design curriculum in KS4 ensuring resources are in place
- Development of language partnerships
- Review intervention strategies and outcomes for SEN and Pupil Premium cohorts



School Improvement Priorities 2025-26

Behaviour and attitudes

- Implement update rules and policies for use of mobile phones in school with consequence for devices for learning
- Focus on addressing school attendance to reduce persistent absences to pre-pandemic levels.



School Improvement Priorities 2025-26

Personal development

- Ambition to survey pupil wellbeing regularly and address ongoing issues.
- Develop improved long-term monitoring of use of pupil premium to assess the impact on pupil development.



School Improvement Priorities 2025-26

Quality of sixth-form provision

- Work with governors on the curriculum for larger sixth forms given the growth of the third language stream currently in S4.

This review will include curriculum provision (including consideration of new courses relevant to future careers) as well as the method of delivery



School Improvement Priorities 2025-26

- **Extra-Curricular Activities/Enrichment** – ensure that all students can access and participate in extracurricular activities. Establish a register of involvement to measure progress to this target. Focus on fitness in primary
- **Community Engagement** – Establish more lettings for local groups/business, support for the Titans in providing a toilet block for the main sport field, School-based nursery enlargement project providing more nursery places for local area.



Challenges

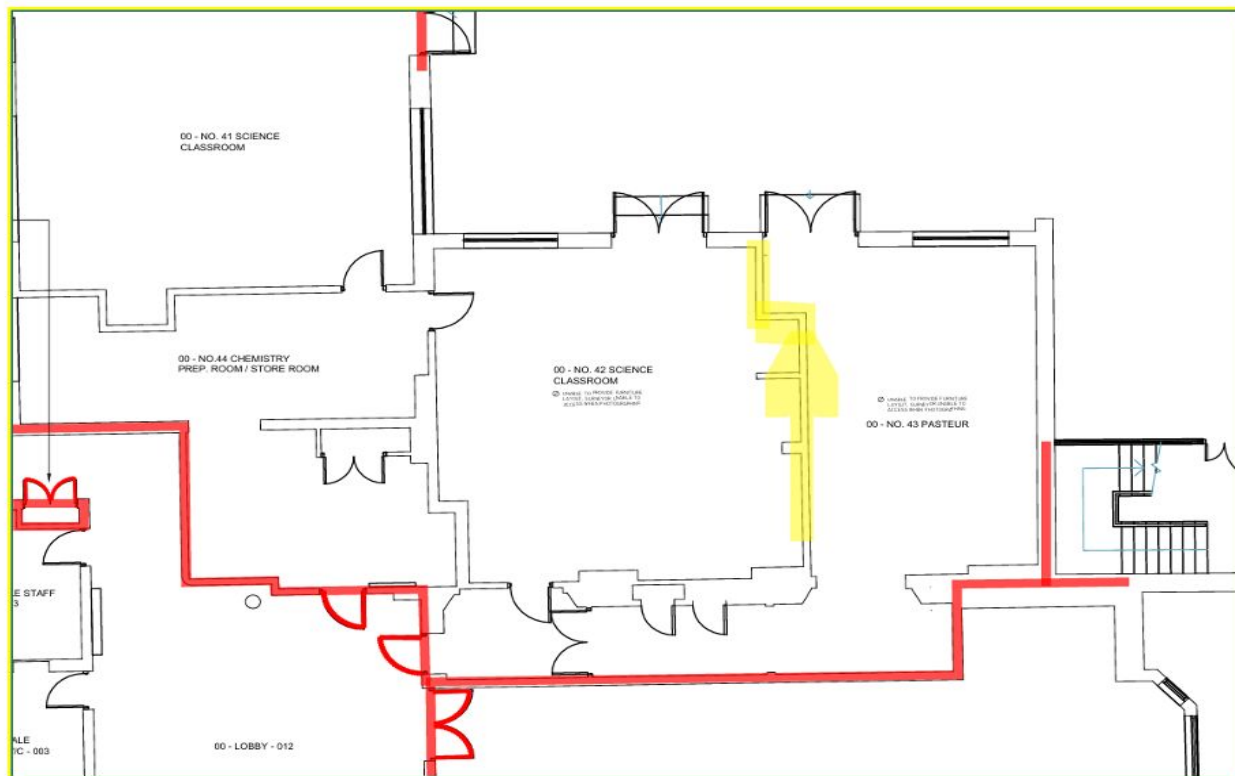
- Funding gap due to unfunded bulge class in Spanish stream (loss of £175K per annum until 2028) - more info to follow.
- Poor maintenance of school buildings, classroom and recreation spaces despite capital and landlord works 2020-2022.
- Lack of classroom space due to growth in secondary – need to plan for more sports facilities.
- Poor condition of key recreational spaces due to surface water drainage issues and groundworks which impacts children's outdoor play time, impedes access to some of our learning spaces and creates a very muddy environment which has knock on impact on the school cleaning services.



Site Developments

Chemistry Laboratory – Capital Campaign

Combining R42 & R43 to create Large Chemistry Lab (12.4m by 7.7m – 96m²)



Completing new
Chemistry Laboratory
anticipated autumn
2025:

£40K approx. from
fundraising and other
available capital funds.



Site Developments

Playground Improvements in P1 – Flood relief

The school has received £65,000 in funding

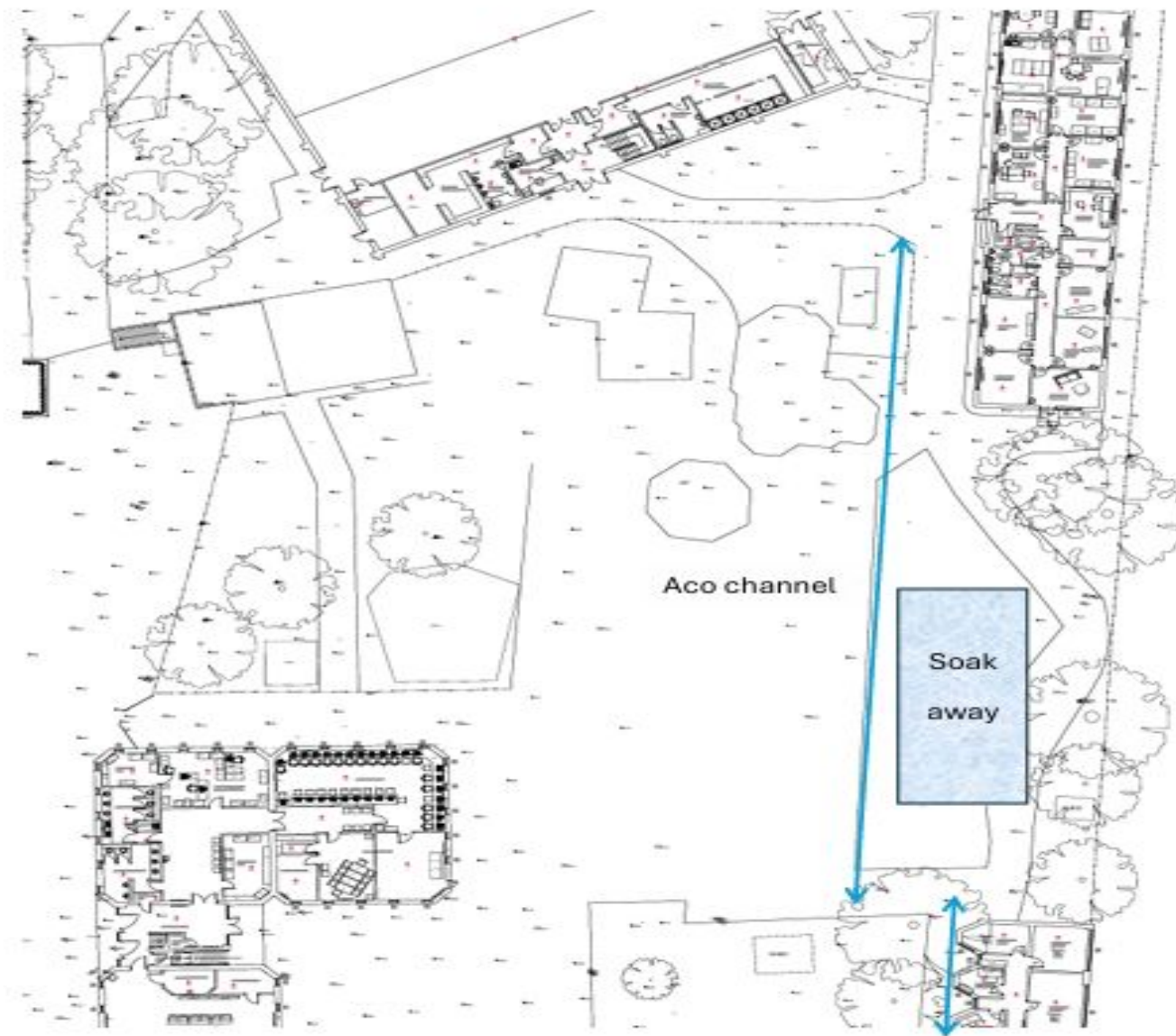
- £20K from Cabinet office
- + £20K matched funding from capital campaign
- £25K from OCC flood relief fund.

Project completion expected
March 26





Site Developments - Playground Improvements in P1 – Flood relief





Site Developments

Planning for Primary 8 classroom build



1 PROPOSED EAST ELEVATION
1 : 100



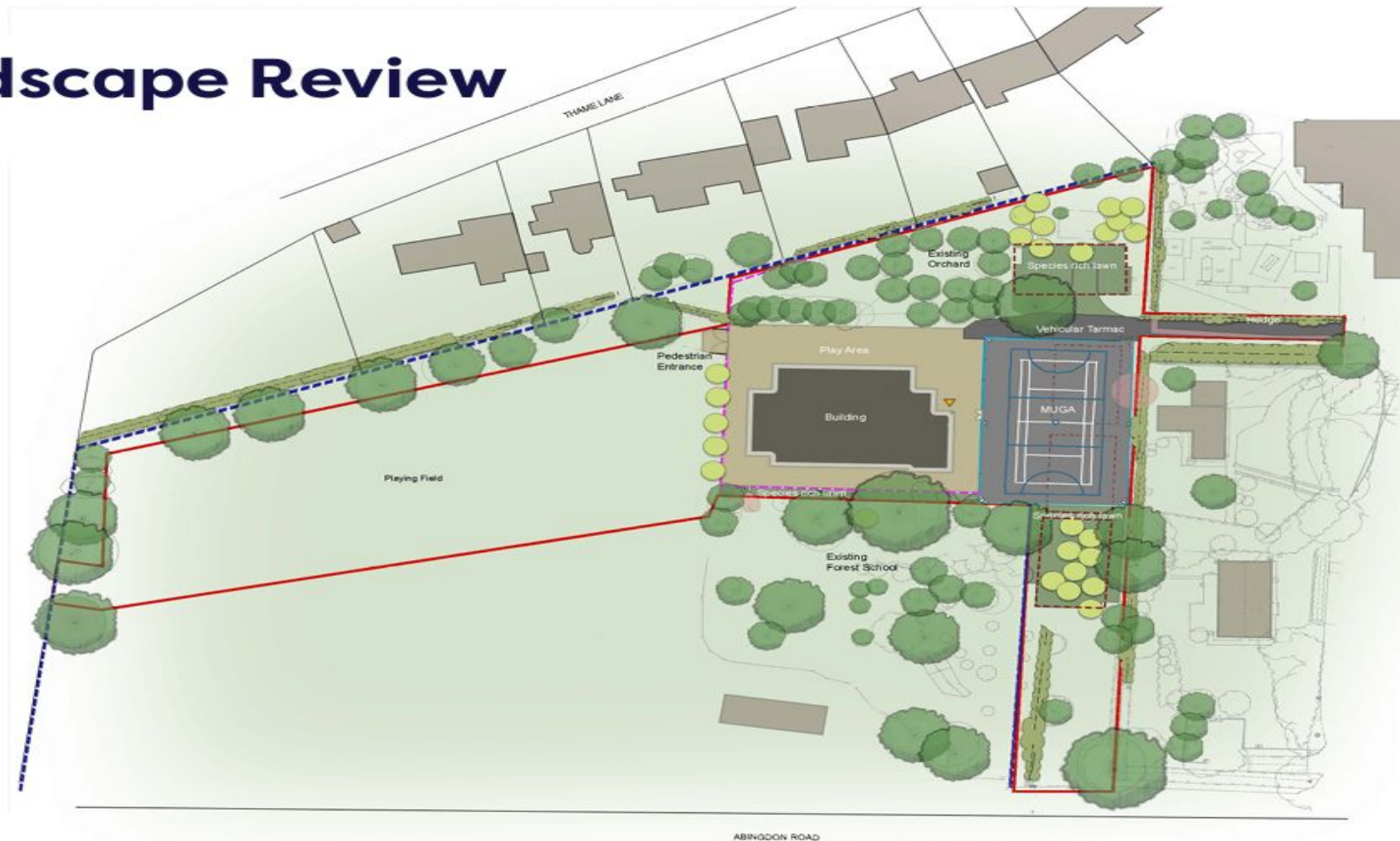
2 PROPOSED WEST ELEVATION
1 : 100



Site Developments

Planning for Primary 8 classroom build

Landscape Review





Future Site Plans

- Focus on improving toilets/ changing rooms
- Provision of extra secondary classrooms
- Provision of more exam spaces for MYP e-assessments
- Working with New Cleaning contractors – Cleantec
- Wellbeing – launching surveys/ putting it foremost in everything we do



Fundraising Update 2024-2025

School Fund Raised £114,000 — THANK YOU

We know where we would have to make cuts if we don't get these donations and it includes:

Support Given in 2024-2025	Total Hours 24-25
ELSA support & counselling	1200 hours
Art & Science Technician hours in secondary	2961 hours
Specialist music and sport tuition in primary	667 hours
Forest School	252 hours



Fundraising Update 2024-2025

Capital Campaign

THANK YOU

Chemistry Lab build underway ✓

Detailed Drainage plans underway ✓

We still need to raise funds for the toilets.



Looking Forward 2025-2026

School Fund Target - £175,000

(The shortfall from lagged funding)

This enables us to fund services, activities and support which would otherwise have to be reduced or cut completely.

This support enables us to provide students with a good education, rather than a standard one.



An £88k shortfall might result in these cuts:

Non core provision	Cost pa	Hours of service provided	1/2 the fundraising target	total hours	what your child would lose
TA Support Year 3 & Additional	£81,190	3,857	£40,595	1,928	92 hours support per class
Primary Specialist Sport & Music provision	£9,911	406	£4,955	203	10 hours per tuition class
Elsa and Counselling	£30,096	1,134	£15,048	567	41 hours per year group
Forest School	£6,263	234	£3,132	117	78 Forest school sessions lost
Stream language exams, partner organisation links	£6,668	153	£3,334	77	77 specialist hours planning language exams, cultural events and curricula
Art & Science Technicians	£35,585	1,548	£17,793	774	663 hours would mean S1 to S3 not doing practical experiments, demonstrations only
Extra curricula activity Coordination e.g. trips, music tuition, lunchtime clubs	£6,611	72	£3,306	36	36 hours cut would seriously affect the ability to offer ECA
	£176,324		£88,162		



School Fund 2025-2026

£10 per month covers the resources of a lunchtime club

£20 per month pays for TA small group support in maths, English or stream languages

£30 per month pays for 1 student to receive emotional support

£50 per month covers a whole year of science experiments for 1 class

£100 per month pays for a class to have a specialist sports coach



School Fund 2025-2026

How to donate, visit our fundraising page.

Donations don't have to be financial, more information on the website.

