



Europa School UK
Thame Lane
Culham, Abingdon
Oxfordshire
OX14 3DZ

Tel: +44 (0)1235 524060

E-mail: reception@europaschool.uk

Website: <https://europaschooluk.org>

Europa School UK Health and Safety Policy

Version and Date		Action/Notes
V2	01/06/2018	Incorporating sections on the Organisation and Arrangements
V3	August 2019	Updated policy for 2019-20. Includes capital and maintenance work programmes.
V4	May 2020	Updated policy to include RIDDOR reporting requirements for COVID
V5	August 2020	Updates include responsible staff, and the start of the school capital works and maintenance (LocatED) programme.
V6	August 2021	Updates for the new academic year -the policy will need to be updated once Trust takes on full lease.
V7	May 2022	Updated following the recommendation of H&S audit February 2022
V8	September 2022	Updated for new Facilities manager and Site team
V9	August 2022	Updated for new academic year 2023-24: New PPM contractors
V10	July 2023	Updated for new academic year 2024-25
V11	July 2024	New organisation chart and external H&S consultant
V12	July 2025	Updated for new academic year 2025-26
Review Date 8/2026		Reviewed Annually at the start of the academic year

Legislation: The Health and Safety at Work Act 1974: Sections 2(3), 3 and 4.

<http://www.legislation.gov.uk/ukpga/1974/37/section/3>

Risk Assessments: The Management of Health and Safety at Work Regulations 1999:

SI 1999/3242. The 1999 regulations impose a duty on employers to produce a risk assessment.

<http://www.legislation.gov.uk/uksi/1999/3242/contents/made>

signed by the Chair of the Governing body, Mr
Principal, Mrs Lynn Wood

Terry Stock and the

Date: September 2025

Statement of Intent

Europa School UK will take all practical steps to provide a safe and healthy working environment for staff and children and visitors to the school. Europa School UK places the health and safety of children, staff and parents, and visitors to the school as its highest priority.

Europa School UK has written this policy to ensure that best practices and procedures are carried out at the school. This policy complies with the legal requirements of the Early Years Foundation Stage statutory framework.

Aims

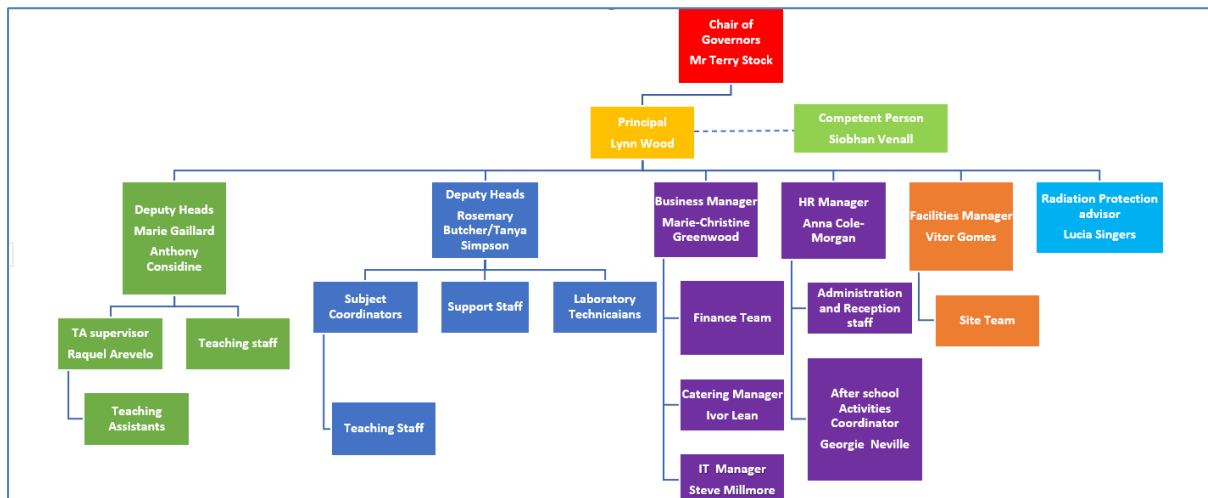
- *To provide a safe, clean and attractive environment for children, parents, staff and visitors to the school.*
- *To operate rigorous health and safety procedures that identify potential hazards and risks and take immediate action to remedy issues or potential hazards.*

Implementation of Policy

Europa School UK will:

- Provide a safe and healthy environment for children, parents and staff to work, learn and play.
- Adopt excellent health and safety practices and procedures.
- Ensure highly qualified and experienced members of staff will be used to identify risk and hazards and implement stringent health and safety practices.
- Ensure members of staff are adequately trained to make them e-aware and alert to possible health and safety issues.
- Provide an environment that is safe and free from hazards and dangers.
- Use equipment and resources according to the manufacturer's instructions and store all equipment and resources securely and safely.

Organisation Chart for Health and Safety



Responsibilities of Governors

- At Europa School UK, individual members of the Governing Body cannot be held to be personally liable for accidents and injuries at the school, when they have acted on collective decisions taken in good faith.
- The Governors will ensure that all practical steps have been taken to meet the aims and objectives of the Health and Safety policy and to reduce the possibility of accident or injury to staff children or visitors.
- The Governors have overall responsibility for ensuring the health and safety of children, parents, staff and visitors at the school.

Responsibilities of Governors and Principal

- Ensure that the Health and Safety at Work Act and the Workplace (Health, Safety and Welfare) Regulations and their associated Approved Code of Practice will be complied with at all times.
- Ensure Risk Assessments are undertaken for all activities, services, resources and equipment in the school. They will also ensure that any actions identified to reduce possible risks are undertaken.
- If appropriate, set health and safety targets for staff as part of the annual Performance Management cycle.
- Identify and implement the necessary actions to meet the health and safety objectives and standards required.
- Ensure adequate financial resources for health and safety training, equipment and resources.
- Undertake a health and safety check every month and take immediate action to rectify any identified issues which could pose a danger to School users.

The Principal is the Duty Holder for Health and Safety in the school

Responsibilities – The Principal

- Appoint a named Health and safety adviser/Competent Person. The named Competent person is an external consultant – Siobhan Vinall, Abingdon Learning Trust.
- Ensure that children, parents, staff and visitors to the school are aware of the health and safety procedures and responsibilities by the reception team and all staff.
- The Education and Skills Funding Agency (ESFA) and the Chair of the Board are kept informed of health and safety performance and issues at the school and respond swiftly to any identified issues.
- Ensure that all practical steps are taken to reduce the potential hazards and dangers at the school to the lowest level possible.
- Ensure that health and safety records are maintained thoroughly by the business manager and school reception and made available to professionals and the Governors Board if appropriate.
- Ensure that the regulatory testing and inspections of premises and equipment are undertaken, and records kept of the assessments and actions taken by the Business manager and site team.
- Ensure that members of staff receive adequate training and communication concerning health and safety policies and procedures at the school. The training schedule and training records are managed by the HR manager.
- Ensure that all accidents and injuries are recorded and investigated to identify the cause of the problem and take any remedial action required to prevent further harm.
- Ensure First Aid provision is excellent with the appointment of highly trained and competent members of staff. The Principal will ensure that First Aid boxes are well labelled and stocked with contents meeting current guidance.
- Ensure that evacuation procedures are clearly displayed and explained to all School users and that practise evacuations and drills are carried out regularly and recorded to identify the issues and concerns.
- Monitoring and reviewing the Health and Safety Policy and Procedures and recommending any modifications or amendments as appropriate.
- Ensuring financial resources are available to implement the policy and procedures and ensure that the school adequately protects the health and safety of all stakeholders.
- Ensuring that highly trained and competent members of staff carry out regular health and safety checks and inspections and take any action promptly to rectify any potential hazard.
- Conduct an annual review of the Health and Safety policy and gain approval from the Governing body for implementing changes.

Responsibilities of the Facilities Manager and the Site Team

The facilities manager and team have several delegated responsibilities regarding the management of asbestos and legionella management by the Principal.

- To carry out regular Health and Safety checks
- Ensure that all work carried out by cleaning staff is done with due regard to the Health and Safety Policies and Regulations
- To manage external contractors in all aspects of H&S
- In conjunction with a member of the governing body and the Principal, regularly carry out a risk assessment of the site and keep appropriate records
- Carry out regular Emergency Evacuation Practices and keep appropriate records
- Test the fire alarm system weekly, ensuring that any defects are dealt with and keep appropriate records

- Ensure that all escape routes and potentially hazardous areas are kept free from obstruction
- Ensure that all fire-fighting equipment is located, tested and results recorded, as regulations require
- Ensure that inflammable materials for use around the site are safely stored and advice is given on the storage of combustible materials
- Ensure that dangerous substances and equipment are used and stored safely, in accordance with COSHH regulations
- Inform the Principal of any changes that are required to the COSHH inventory
- Checking and maintaining the play area and outdoor equipment
- Organising removal of rubbish from the site as and when necessary
- Gritting of premises in icy weather as per the Health and Safety Policy
- Ensure appropriate Legionella checks are carried out and recorded.
- Keep the asbestos register up-to-date and ensure that all contractors sign the register.

Responsibilities of Catering Manager

- to be familiar with the school's H&S Policy and is responsible for both health & safety and food hygiene within the school's catering kitchens and servery areas.
- responsible for reviewing the Food Safety Policy on an annual basis.
- responsible for ensuring all kitchen staff are instructed and informed of the contents of the School's H&S Policy and the duties this imparts.
- to be familiar with the Food Safety Act 1990 and the implications and requirements this places on the school.
- inform the Principal, through the Business Manager, of any environmental health visits, HSE visits, any other regulatory body visit and the outcome of any such visit. In addition, the catering function will be maintained to an acceptable standard at all times necessary to meet the statutory requirements of any authorised regulatory body.
- inform the Principal, through the Business Manager, of any kitchen equipment problems, failures, hazards, defects, and replacements which might be needed to discharge the school's responsibilities to the users of the catering service.
- ensure that all records are completed and available for inspection as required. The Catering Manager will ensure that all new legislation/regulation is implemented within the catering provision e.g., Natasha's Law

Responsibilities of external Health and Safety advisor

The external Health and Safety advisor provides professional expert advice to the school Trust including attending H&S meetings and giving guidance and support for all H&S practices such as school fire drills.

Responsibilities - School Staff

Members of Staff at the School have responsibilities in relation to ensuring the health and safety of School users and assisting with the effective implementation of the policy and procedures. School Staff are required to report health and safety issues or concerns to the Principal or member of the senior management team immediately.

The School Staff MUST ensure that:

They read and understand the health and safety policy and the following related policies and procedures:

- Emergency Evacuation Procedures
- Accident and Injury Procedures.
- Lone Working
- Risk Assessments associated with their specific role
- Off-site Visits.
- Safer recruitment
- Security of the Premises
- Entry and Exit to the School
- Visitors' Policy

Members of Staff must:

- Listen to and act upon health and safety practice and updates issued by the Principal.
- Take all reasonable and practical steps to ensure their own health and safety at work and for those under their direct care or supervision.
- Record accidents, injuries or health and safety related incidents according to the school procedures.
- Participate in professional development opportunities and relevant training when required to do so by the Principal and adhere to current health and safety legislation and guidance.

All Pupils must:

- Comply with all the school policies and regulations.
- Cooperate with all school staff on health and safety matters.
- Not interfere with anything provided to safeguard their own health and safety.
- Take reasonable care of their own health and safety.
- Report all health and safety concerns to a teacher.

Health and Safety information is communicated to pupils via their class teachers and via year or key stage assemblies.

All visitors/contractors must:

- On arrival they must report to the school reception and sign a record of the date and time of their arrival (including any car registration details and the name of person they are visiting) and before leaving further record their time of departure.
- Receive a H&S briefing with the Facilities manager/site team and conducting important safety checks such as the asbestos register.
- Comply with the visitor's code of conduct which is handed to all visitors on the site.
- Cooperate with all school staff on health and safety and safeguarding matters.
- Not interfere with anything provided to safeguard their own health and safety.
- Take reasonable care of their own health and safety.
- Report all health and safety concerns to their accompanying member of staff if appropriate or to the principal.

Insurance

Europa School will ensure that it has adequate insurance cover to ensure the health and safety of all school users, children and staff.

The Children Act and the Health and Safety at Work Act require public premises and places of work to have adequate insurance cover. The school will display its Public Liability Insurance Certificate in the main entrance of the school and copies are available upon request to the Principal.

Liability

Under provisions contained in the Occupiers Liability Act the School has a duty to ensure that both children and any visitors are kept reasonably safe and will take every practical step to ensure this happens.

The school's full responsibilities and procedures in respect of Health and Safety are contained in this policy and in related policies and procedures (links provided).

Disability Equality Impact Assessment

This policy has been written with reference to and in consideration of the school's Disability Equality Scheme. Assessment will include consideration of issues identified by the involvement of disabled children, staff and parents and any information the school holds on disabled children, staff and parents.

Competences for Tasks and Training

- Induction training on health and safety will be provided for all new employees. This includes safeguarding and Prevent training.
- Job specific training will be provided by designated trainers or external courses (First aid, laboratory safety).
- Training Records are kept by the HR Manager and posted to staff personnel files.

Examples of specific jobs requiring training are:

- Trip coordinator
- Science Technicians
- IT Technicians
- Designated first aiders
- Site Manager and team
- Facilities Manager
- Ground's people
- HR manager
- Business manager
- Safety officer

Arrangements

Accidents and Incident Reporting

- The Europa policy on accident and Incident reporting is accessible on the Europa school website. This includes reporting reportable incidents using RIDDOR.

Administration of Medicines

- The Europa policy concerning supporting pupils with medical conditions is accessible on the Europa School website.

Asbestos

- All staff have been made aware of the location of any asbestos in school.
- The duty holder is the Principal of the School.
- **The Asbestos register (hard copy) is kept in facility manager's office.**
- All contractors must sign a declaration that they have seen the Asbestos register before starting work on site.
- The school asbestos file is kept in the facilities manager.
- The person responsible for asbestos management is the facility manager.
- The person responsible for Asbestos communication (the Principal) has attended asbestos awareness (including duty to manage) training to ensure that they understand their duties.
- The Risk assessment for Asbestos is reviewed and updated.
- Bi-annual inspections are performed.

Behaviour

The school's general behaviour policy is accessible on the school website.
The primary and secondary specific behaviour policies are also accessible on the school's website.

Biological and Respiratory Infections

The Europa School has a risk assessment in the case of an outbreak of biological or respiratory infection

Child protection and safeguarding

The child protection and safeguarding policy is accessible on Europa School UK website.

Control of Hazardous Substances

- The use of hazardous substances in school will be kept to a minimum.
- The Facilities Manager (with appropriate support from senior managers) will complete a COSHH assessment for all hazardous substances used on site.
- The use of substances is in line with the appropriate assessment (COSHH/CLEAPSS).
- Gas cylinders will be stored in a locked cage.

Defibrillators

- There are two defibrillators (located in the Schuman Hall porch and at the entrance to the Sports Hall) and registered with The Circuit (The National Defibrillator Network).
- This is in line with DfE instructions:
https://assets.publishing.service.gov.uk/media/65844c8ced3c34000d3bfd5b/Automated_external_defibrillators_-_guidance_for_schools.pdf

- The defibrillators have been registered for **Public Access**
Available between **07:00 and 18:00 from Monday to Friday**
Available for **term time dates in 2024-25**
The pads have been registered as valid for 18 months until 9 March 2026 (or sooner if used of course). Please note that the defibrillators do not have paediatric tabs, but the machines can be automatically set for paediatric patients (lower intensity shocks).
- The facilities and Business Manager have attended lifesaving training session (CPR and AED defibrillator use)

Display Screen Equipment

- For members of staff with 'desk-based jobs' the HSE's procedure for carrying out workstation self-assessment on an annual basis will be followed.
- For members of staff provided with portable devices (e.g. laptops, tablets) staff will be issued with the current HSE guidance on their use.

Educational Visits

- There is a school procedure in place for the organisation of trips.
- The school has appointed an Educational Visits Coordinator who will complete EVC training in 2025-26
- All off-site trips will be subject to a risk assessment.
- Any plans for school trips will follow the latest government guidance.

Electrical Testing

- All items of portable electrical equipment in school are inspected and tested annually. Only qualified and authorised persons may conduct electrical work.

Fire Safety & Evacuation of the Building

- Fire exits have appropriate signage.
- A fire drill is practised and documented once a term by the Fire Officer and Facilities Manager.
- Evacuation times and any issues which arise are reported to the Governors.
- Fire extinguishers are checked monthly supervised by the site team and a record is kept.
- A separate fire action plan is available on the school's website.
- A Fire risk assessment is commissioned annually, and actions are carried out.

First Aid Provision

- First aid kits are kept in each primary classroom in a medical cabinet.
- First aid kits are kept in each science laboratory and sports facility. Eye wash is currently stored in each art room and science laboratory.
- There are sufficient spare kits kept in reception for educational visits and outside activities
- The designated person for maintaining first aid supplies is Ms Susi Dalton.
- First aid is provided on school days by reception staff. Any incidents are recorded on an incident form (students and staff have different forms) and significant injuries are recorded in the accident log books with a copy filed. The accident logbooks are reviewed monthly by the Principal.
- A list of first aiders is posted in staff rooms and reception areas.
- All PE staff and Laboratory technicians are first aid trained.
- Portable first aid kits are taken on educational visits.

- If the risk assessment dictates that it is necessary, a qualified first aider will be present on the trip.
- Food allergens - EpiPens are kept in all primary staff areas and at the school reception, for use by trained reception staff in the event of severe allergic reactions.

Gas/ Heating Systems

- Annual servicing of the gas and heating system are conducted every six months
- Pressure testing is performed every six months.
- The Autoclave equipment used in the Science department for cleaning glassware will be tested and serviced on an annual basis.

Hygiene

- The school management will check the cleaning of the school on a regular basis to ensure good standards of hygiene across the site.
- The school has re-cycle bins and non-recycle bins across the site identified by colour. There are also food bins on site and in particular, in the canteen. These bins will be emptied regularly to ensure good hygiene.
- Students doing litter sweeps will be provided with suitable gloves and litter pickers from the main reception.

Legionella

- The duty holder (Principal) has attended Legionella awareness (including duty to manage) training to ensure that they understand their duties.
- The person responsible for legionella management is the PPM contractor Dalkia.
- The Principal has delegated the monitoring and maintenance of the water system to DALKIA. This includes monthly flushing outlets, temperature recording, and maintenance of showers. DALKIA must report any problems immediately to the Principal and also conduct a site walk with the principal on a monthly basis in order to check maintenance and reporting procedures.
- A Legionella risk assessment is performed every two years.
- The school has a Legionella management procedure

Lone Working

- The Lone working policy and risk assessment has been reviewed and agreed and is accessible to all staff.

Manual Handling

- Pupils and staff must only lift equipment and furniture within their own individual capability.
- Manual handling training will be provided for appropriate members of staff including, if necessary, including how to lift pupils safely.

Health and Safety Meeting

- A Health and safety meeting will be held at least two times a year: involving management, site, canteen, unions and governors.
- An external Health and Safety risk assessment is performed annually.

Playground Equipment

- Playground equipment and its use are supervised during all breaks during the school day.
- If the equipment is used during lesson time, supervision is again maintained.
- A decision is made, recorded, and enforced if inclement weather (damp/icy) means that equipment becomes unsafe to use on a particular day.
- Routine check (annual) is performed.
- Playground equipment is subject to an annual inspection by an external contractor

Playground Supervision

- Appropriate levels of supervision will be maintained in playgrounds as described in the playground risk assessment.

Radioactive sources

- The employer's *Radiation Protection Advisers* (RPA) are JESS ANGUS and ANGIE MANNING of the UK Atomic Energy Authority (Tel. 01235 465018). The Teachers in Charge/Radiation Protection Supervisor (RPS) is **Mrs Lucia Singer**
- Europa School UK follows the guidance in CLEAPSS Guide L93 *Managing Ionising Radiations and Radioactive Sources*.
- The Standard Operating Procedures / Local Rules for the use of ionising radiations have been adapted from the CLEAPSS model /drawn up in consultation with the RPA and it is a function of the Teacher in Charge to see that they are adhered to. The L93 policy is located in the Red Radiation Folder in the prep room at the rear of Room 102 for reference.
- The *Radioactive Sources History* (i.e. authority to purchase, a record of delivery, details of events in the life of the source, and eventual certificate showing method of disposal) is also kept in the Red Radiation Folder at the rear of Room 102 for reference together with the *Use Log* (showing the times that any sources are removed from and returned to their store) and the *Monitoring Record* of tests for leakage of radioactive sources and contamination. Leakage testing takes place once each year in September. It is the responsibility of the Radiation Protection Supervisor (RPS) to ensure these records are all kept up to date.

Risk Assessment

- **The school's risk assessment policy is accessible on the school's website**
- A risk assessment register is accessible to all staff on the school central drive for staff to inspect and refer to as necessary.
- The school maintains a comprehensive set of risk assessments that cover curriculum-based activities in school, school visits and the running of the school building and grounds.
- They will be made available on the school central drive for staff to inspect and refer to as necessary.
- The management team will take steps to ensure that appropriate staff are aware of the risk assessments appropriate to their role and will monitor compliance with control measures specified in the risk assessments.
- All risk assessments are reviewed on an annual basis (except risk assessments for school trips which should be reviewed each time the trip takes place).

Safer Recruiting

- The school's safe recruiting policy is included in the Europa School's safeguarding policy.

Science Health and Safety Policy

- The Science Health and Safety Policy is accessible on our website.
- There is a risk assessment for Science Classes in the Laboratory as well as specific risk assessments for experiments.

Security

- **The school's site security and access policy is accessible on our website**
- The school will take all reasonable efforts to restrict access to the building to prevent unauthorised access to children and ensure the personal safety of staff.
- The school site is enclosed by high fencing. CCTV is in place at the main entrances and a risk assessment for site security is in place.
- All staff are required to wear and clearly display a school badge and display a school car permit in their car parked on the school site.
- Staff will challenge anyone who is found on the grounds without a badge.

Slips Trips and Falls on the Level

- The potential for slips, trips and falls in school has been risk assessed, and appropriate controls have been put in place.
- This includes working procedures for mopping floors, absorbent floor mats near entrances and regular hazard spotting inspections.

Snow and Ice

- A plan will be produced outlining the main pedestrian routes that the site staff will strive to keep open during snowy and icy conditions.
- If it becomes impossible to keep these routes, clear the head teacher is informed immediately and this information contributes to any decision to close the school.

Stress at Work

- **The schools' stress management and wellbeing policies are accessible on our website.**
- Proactive – The management team will as a priority seek to reduce stress on staff caused by workload or bullying by careful change management and good attention to training, mentoring, and coaching.
- Reactive – individuals who are identified to be suffering from excessive levels of stress (caused by work or personal issues) are supported in accordance with the school's welfare policies.
- A staff wellbeing committee meets termly.
- The school has an external well-being support service for all staff.
- The school has appointed a Mental Health lead, Georgie Neville.

Supervision of Pupils

- Sensible, safe behaviour will be promoted to pupils by all members of staff.
- Dangerous or risky behaviour displayed by pupils will be addressed and dealt with within the school rules.
- Pupils will only be allowed into or stay in classrooms under adult supervision.

- Appropriate supervision of cloakrooms and toilet access will be in place at busy times.

Training

- Health and Safety Training needs are assessed as part of an individual's annual review.
- Training needs may also be identified as part of a risk assessment process.
- H&S Training records are held on the training platform Educare.
- Evidence of INSET training on fire evacuation training is recorded on attendance logs of the meeting.

Visitors

- The Visitor policy is available on the Europa School website.

Waste Management and Hazardous Waste

- Waste produced by the school is separated into recycling categories and collected on a frequent basis by a waste removal contractor.
- Hazardous waste is collected in dedicated bins by specialised contractors.
- The school has a membership of CLEAPSS, a school science teaching advisory service, which provides advice and guidance on the use and disposal of standard substances and experiments used in the science laboratory.
- Used Sharps are collected by the site team to ensure safe disposal.
- Medicines no longer required are not allowed to accumulate. They are returned to the parent in person for disposal.

Working at Height

- Working at heights risk assessments have been completed for the school.
- Appropriate record-keeping and safe systems of work are kept in the working at heights file.
- All site/caretaking staff who undertake to work at heights have been on a half-day training course.
- Teaching and other staff who assist in putting up displays in school have been given appropriate in-house training and advised that they must:
 - Use appropriate access equipment - step ladders, kick stools, etc.
 - Wear flat shoes whilst putting up displays
 - Not climb on furniture to put up displays

Schedule of Reviews and Record-Keeping Tasks

Schedule of Reviews and Record-Keeping Task	Frequency	Responsible Person(s)	Comments
Review of Health and Safety Policy Organisation and Arrangements	Every year and when required	Principal	New Regulations, Codes of Practice, Academy Policies, etc may have to be added in the interim.
Review of COSHH assessments	Every 2 years or whenever changes occur.	Principal	Central record to be kept by site team; all contractors to provide COSHH information if required.
Record of water quality testing, temperature taking	As required by the Water Risk Assessment	Dalkia for regular onsite testing	Logbook kept in school
Electrical Safety			
Certification of fixed installations	As advised on current Certificate	Site team/ GRM	
Record of maintenance inspections of fixed installations	As advised	Dalkia	
Record of Portable Appliance Testing		School PAT Team – across Site, IT and Science	Appliances to be categorised for testing according to vulnerability.
Record of Gas appliance testing	At least once a year	Site team	Only a Gas Safe registered person can do this.
Fire Safety			
Record of staff training	Keep up to date	COA	
Record of nominated persons - "fire marshals"	Keep up to date	COA	
Record of Fire Fighting appliances check	Monthly	Site Team	
Record of Fire Fighting appliances maintenance	Annually	Site Team	
Record of Fire Alarm testing	Weekly	Site Team	Call points to be tested on a rota basis.
Record of Fire Alarm and Battery backup maintenance	6 monthly	Dalkia	Contractor carries out.
Record of Fire Safety audits	Annually	Facilities Manager	

Record of Emergency Lighting tests	Monthly	Dalkia	
---	---------	--------	--

Record of Fire Drills	Termly	Recorded in Reception Office	Reviewed by Principal
Record of False Alarms	As required	Recorded in Reception Office	Note reasons.
First Aid			
Record of Accidents/ Injuries	As required	Reception Staff/ Principal	Reviewed monthly by Principal – significant patterns or incidents reported to FGB.
Record of number of First Aiders and first aid stock	As required after assessment of needs	HR Manager	
Review of provision	Annually and as required	Reception Staff/ Principal	Need for replacement when a first aider leaves.
Record of training of First Aiders	Keep up to date	HR Manager	Important for arranging re-training.
Record of Manual Handling training	Keep up to date	Facilities Manager	
Record of Display Screen Equipment assessments	Keep up to date	HR Manager	
Record of Staff H&S Representatives training	Keep up to date	HR Manager	
Record of other H&S training	Keep up to date	HR Manager	
Record of Young Persons on Work Experience	S5 Work experience June-July	Work Experience Coordinator	

Record of Asbestos visual check of condition	Annually or more frequently, if considered necessary	Principal/Facilities Manager	Where vulnerable to damage.
Record of journeys, outings, off-site activities, etc	On all occasions	Heads of Primary and Secondary	Full details to be kept Risk Assessments to be complete and reviewed
Record of Risk Assessments	Keep up to date	Principal	Central record to be kept by Principal.
Review of Risk Assessments	Annually or as required	Principal	
Review of security arrangements	Annually and as required	Principal	
Record of incidents	Keep up to date	Reception Staff/ Principal	
Record of maintenance of equipment	annually	Site team	
Review of Behaviour Policy	Every two years or when required	Principal and Heads of School	

Review of Policy on Special Medical Needs	Every 3 years or as required	Principal/SENCO (primary and secondary)	
Record of students with Special Medical Needs	Annually or as required	SENCO (primary and secondary)	
H&S Inspection Reports	Annually, as scheduled	Principal/GRM	
H&S Audit Reports	Every 2 years	Principal/ Facilities Manager	
Record of all visitors on Academy Premises	Every occasion	Receptionist	Contractors should check in and out, recording times.