



Europa School UK

Thame Lane
Culham, Abingdon
Oxfordshire
OX14 3DZ

+44 (0)1235 524060

info@europaschooluk.org

http://europaschooluk.org

Pupil premium expenditure and impact 2014-15

In view of the small number of pupils receiving the premium, care is taken in this report not to identify individuals

Total income from Premium

£12061

Total of pupils (FSM, FSM6, LAC, Service): 11

Supplementary support provided by Teaching Assistants under Learning Support guidance.

Areas of intervention:

- 1:1 Wave 3 Literacy and Numeracy Support
- Mathematics support and stretching of more able in small groups
- Targeted training for teachers in Years 1, 2 and 3.
- Language: aid to auditory processing
- After school club funding in support of curriculum objectives

Total cost: £11134

Other expenditure

- Magazine Subscriptions to support second language acquisition: £226
- Occupational Therapist: £252
- Supplementary Sports provision: £175
- Residential Educational Trip: £290

Impact

In terms of progress and attainment in the key UK judgement areas of Numeracy and English Literacy, our PP pupils are matching, or in most cases exceeding the levels set by the school as a whole.

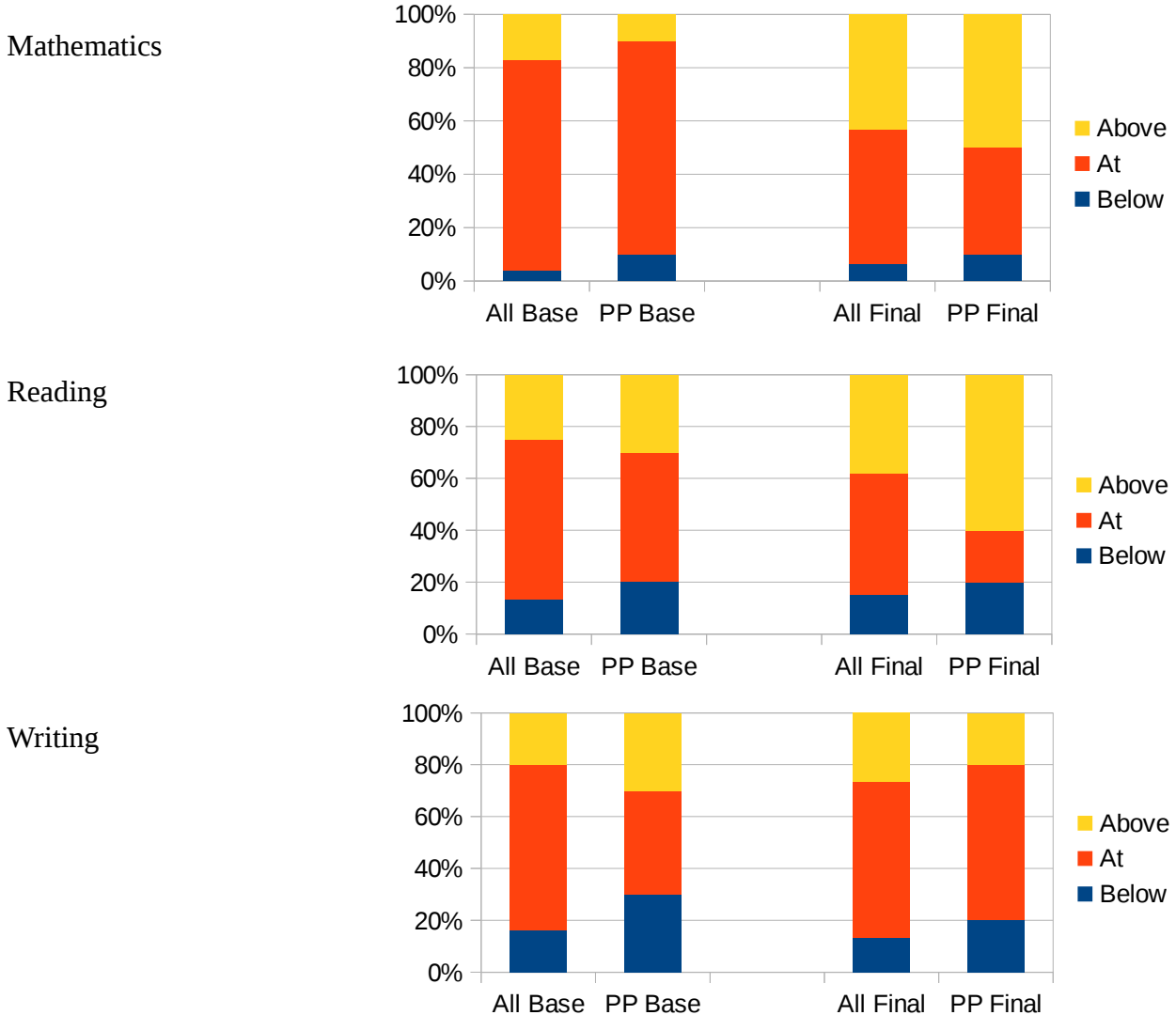
The graphs below show for the year groups where we have PP pupils the NC levels achieved by them in relation to the whole year group. The base is taken from the level at the start of the key stage and the final is as at end of June, 2015.

For the following analysis it should be kept in mind that the number of relevant PP pupils is 10, with one too young to be included anomalously in the data, and therefore the data is highly sensitive to results of any single pupil.

In Mathematics, the progress throughout the school and the attainment of pupils has been excellent, and yet that of PP pupils exceeds it.



The same is largely true of Reading. In Writing, we do see the general impact of our bilingual approach. Among PP pupils, 18% are EAL, compared with nearly 50% across the school. We would expect the majority of the PP pupils to do well in literacy, once the initial phase of learning through a second language has been established. In depth study of the data shows this to be the case, with rapid acceleration in progress in the older year groups, matching that of other English native speakers in the school.



Only one of our PP pupils benefits from strong French or German in the home. Of the others, eight of the ten have reached or passed A2 level in the respective second (or third) language and are on course to reach the level required for fluidity in the secondary school. We will continue next year to support in these languages as required.